



Clifden Road, London, E5

BUTLER & STAG



A spacious mid-terrace four bedroom Victorian house situated on a popular residential turning off the Chatsworth Road, Clapton.



- Available Now
- Victorian House
- Unfurnished
- 3/4 bedrooms
- Private Garden
- Moments from Chatsworth Rd and Hackney Central



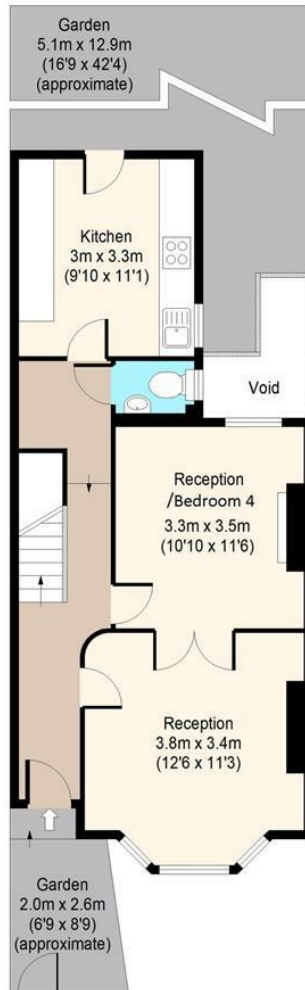


Clifden Road, E5



Ground Floor

Approx. 50 Sq. meters (538 Sq. feet)



First Floor

Approx. 49 Sq. meters (527 Sq. feet)



Total area: approx. 99 Sq. meters (1065 Sq. feet)

For illustration purposes only - not to scale

www.londonpropertyassessments.co.uk

BUTLER & STAG

☎ 020 8102 1236

🏠 508 Roman Road, Bow, London, E3 5LU

✉ bow@butlerandstag.com

www.butlerandstag.uk

IMPORTANT NOTICE - These particulars have been prepared in good faith and they are not intended to constitute part of an offer or contract. We have not performed a structural survey on this property and the services, appliances and specific fittings have not been tested. All photographs, measurements, floor plans and distances referred to are given as a guide and should not be relied upon.